

Instructiuni importante de siguranta

1. Pericol de incendiu sau electrocutare: Va rugam sa opriti alimentarea inainte de instalare.
2. Folositi intotdeauna produsul in intervalul de tensiune indicat.
3. Proiectat pentru montaj aplicat sau montaj suspendat. Nu este indicat pentru montaj pe structura mobila.
4. Folositi intotdeauna cablurile furnizate de catre producator, nu utilizati niciodata cabluri neizolate.
5. Va rugam sa urmariti cu strictete desenele inainte de instalare!
6. Va rugam sa deconectati sursa de alimentare cand instalati sau demontati corpul de iluminat.
7. Va rugam sa testati intreg corpul de iluminat dupa ce intregul montaj este gata, pentru a va asigura ca nu exista nici o problema de conexiune intre tuburi si conectori. Acest lucru trebuie facut inainte de pozitionarea finala a corpului de iluminat.

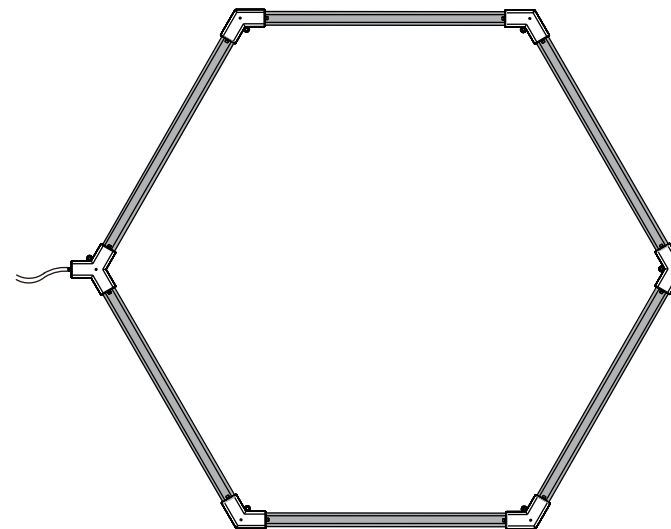
Garantia produsului este limitata la 2 (doi) ani

Produsele noastre sunt fabricate la cele mai inalte standarde de calitate si executie.

Garantam cumparatorului ca, in cazul in care apare o defectiune in perioada de garantie de 2 ani vom furniza piesele necesare, fara costuri suplimentare, pentru a restabili produsul la functionarea normala.

Aceasta garantie se aplica doar cumparatorului initial. Daunele cauzate de o instalare necorespunzatoare, utilizare necorespunzatoare a produsului, nu sunt acoperite de garantie. Nu suntem raspunzatori de costurile de manopera si/sau daunele suferite in timpul instalarii sau inlocuirii.

Instructiuni de instalare si utilizare a corpurilor de iluminat hexagonale



Cititi acest manual cu atentie inainte de instalarea produsului

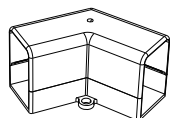
Acest manual este un ghid cu pasii de instalare

Instructiuni de instalare

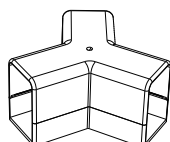
* Verificati cantitatea de tuburi de iluminat si de accesorii imediat dupa deschiderea coletului.

Lista de componente

Model	5-Hex [1.6x2.4m] Design	Flux luminos	100-120LM/W
Tensiune	85V-245V	Indice de redare a culorii	> 90
Suprafata abajurului	22mm	Temperatura de culoare	6500K
Putere	168 W		
Dimensiune	1635 x 2364mm		



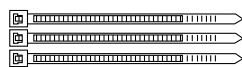
Conector tip V
x11



Conector tip Y
x9



Cablu de alimentare
x1



Benzi de fixare



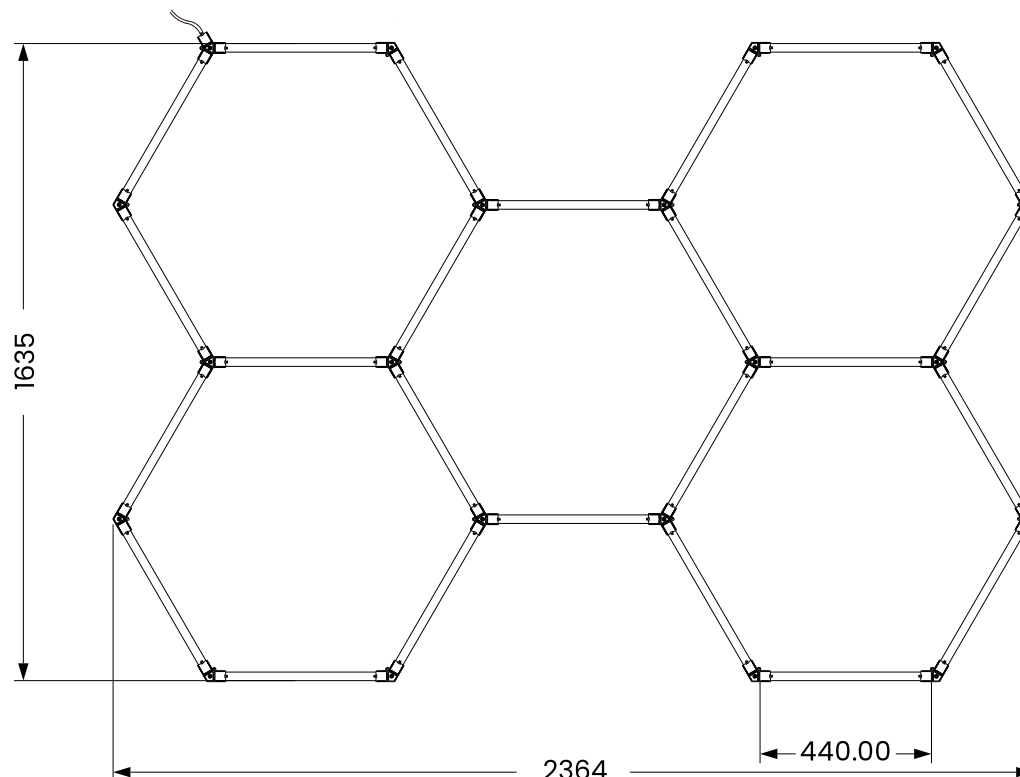
Tub (dimensiune 440x22mm) x24pcs

2

Diagrama de instalare

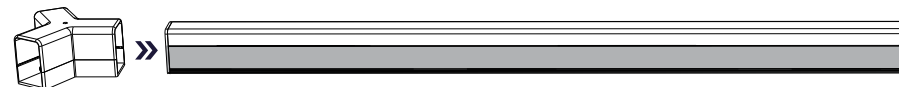
1. Conectati tubul de lumina cu piesele de imbinare, asa cum este aratat in figura de mai jos.

Unitate de masura: mm



2. Verificati conectorii pentru imbinare si conexiunile corpului de iluminat pentru a va asigura ca nu sunt slabe, apoi porniti alimentarea pentru a testa corpul de iluminat montat.

3. Dupa testarea corpului de iluminat montat, instalati corpul de iluminat hexagonal la pozitia dorita, asigurandu-va ca imbinarile dintre tuburi sunt bine facute, iar dupa ce corpul de iluminat hexagonal este fixat, puteti porni alimentarea.



Atentie: Daca instalati incorect, va rugam sa nu trageti cu forta de lampa si de conector. Tineti conectorul si miscati lent lampa pana cand se separa.

3

Important Safety Instructions

1. Fire or electric shock hazard: Please turn off the power before installation.
2. Always use the product within the safe working load range.
3. Designed for static positioning and suspension. Do not use for lifting or dynamic positioning.
4. Always use cables provided and specified by the manufacturer, and never use uncoated cables.
5. Please strictly follow the drawings before installation!
6. Please disconnect the power supply when installing or removing the fixture.
7. Please test the entire lamp after the lamp body is spliced to ensure that there is no problem with the overall lamp connection.

Two (2) Year Limited Warranty

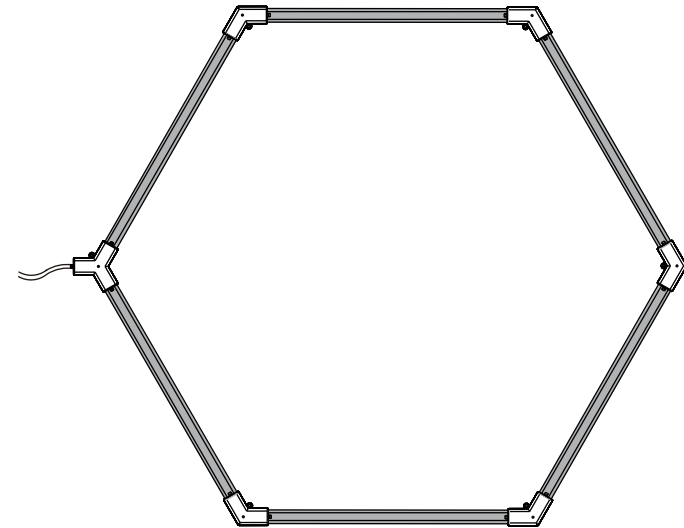
Our products are manufactured to the highest standards of quality and workmanship.

We guarantee to the purchaser that if damage occurs during the 2-year warranty period, we will provide the necessary parts free of charge to restore the product to normal operation.

This warranty applies only to the original consumer. Damage caused by improper installation, abuse or misuse of the product by a special company or you are not covered under warranty. We are not responsible for labor costs and/or damages incurred during installation or replacement.



Hexagonal Light Installation and Operation Instructions



Read this manual carefully before starting the installation

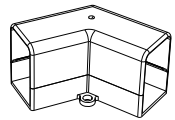
This manual is a guide to the installation steps.

Installation Instructions

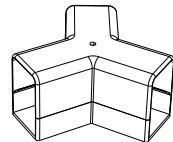
* Check the quantity of lamps and accessories after opening the package.

Parts List

Model	5-Hex [1.6x2.4m] Design	Luminousflux	100-120LM/W
Voltage	85V-245V	Color rendering index	> 90
Luminous surface	22mm	Color Temperature	6500K
Power	168 W		
Size	1635 x 2364mm		



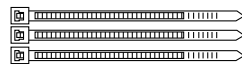
V type connector
x11



Y type Connector
x9



Power cord
x1



Nylon cable tie

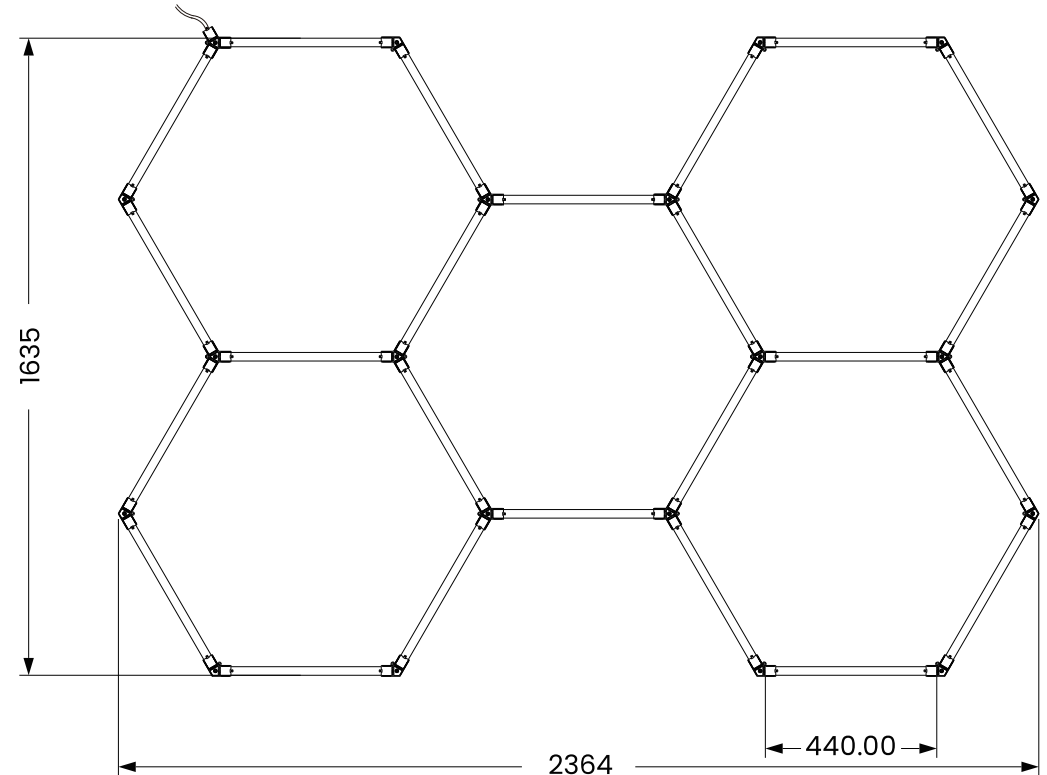


Tubes(size440*22mm) x24pcs

Installation Diagram

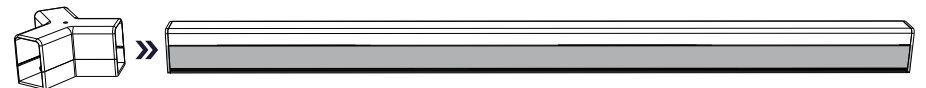
1.Connect the light tube with the splicing parts as shown in the figure below.

Length Unit: mm



2.Check the splicing parts and the lamp connection to make sure they are not loose and then turn on the power to test light.

3.After turning off the power, install the lamp as a whole to the designated position, make sure the joints are not loose.and after the lamp body is fully fixed, turn on the power.



Notice:If you install it incorrectly, please do not pull the lamp and the connector hard. Hold the connector and shake the lamp slowly until it separates.